



**TOURNAMENT**

**GUIDE**

V2

# TABLE OF CONTENTS

- 3 Message from Co-Founders
- 4 Mission & Vision
- 5 Core Values
- 6 Welcome to Seattle
- 8 Raffle Prizes
- 9 Icebreaker Social
- 10 Conference Setup
- 11 Team Icons
- 16 Tournament Schedule
- 21 Awards & Giveaways
- 26 Watch Live
- 27 Marketplace Merchants
- 28 Sponsors & Supporters
- 29 Tournament Producers & Volunteers
- 30 Pride Nights
- 33 USA Hockey
- 34 Emergency Contacts & Report Incidents
- 35 Donate & Volunteer
- 36 Get Connected & Stay Connected

#SEAPRIDECLASSIC26



# A MESSAGE FROM OUR CO-FOUNDERS



**Steven Thompson,  
President &  
Co-Founder**



**Joey Gale,  
Vice President &  
Co-Founder**



## Welcome to Seattle Pride Classic 2026!

Hockey brings us together. Whether you've traveled a few hundred miles, or a few thousand, we're so grateful you're part of our community and chosen to join us in Seattle, Washington. As we continue to fight the good fight for inclusivity in hockey – we encourage you to share, celebrate, and have fun this weekend.

Share your space, your feelings, what gives you hope, and how hockey (and our community) lift you up. Celebrate each other, our differences, how far we've come, and the work that still needs to be done. Have fun, allow this time and beautiful setting to recharge you.

On behalf of the Seattle Pride Hockey Association,  
welcome to the Seattle Pride Classic!



# MISSION & VISION

## MISSION

Our mission defines what we do, who we serve, and how we show up every day. It is the foundation that our programs, budgets, and decisions are built upon — a practical game plan that guides our work right now. If an idea, investment, or action doesn't serve this mission, it doesn't belong.

Make hockey a place where LGBTQIA+ people thrive by building and connecting our community.

Through community and culture-shift events, Seattle Pride Hockey Association centers belonging, opportunity, inclusion, and education to bring hockey players, teams, organizations, fans, and allies closer together.

## VISION

Our vision defines where we are going. It is our long-term north star — the future we are intentionally building toward through every program, partnership, and decision. While our mission guides our day-to-day work, our vision challenges us to think bigger, lead boldly, and shape the culture of hockey.

Champion an LGBTQIA+-inclusive hockey culture where players are safe, seen, and celebrated for being themselves.

# CORE VALUES

Our Core Values define how we show up, make decisions, and hold ourselves accountable.

## QUEER JOY IS THE POINT.

We center joy, visibility, and authenticity in everything we do.

Hockey should be a place where LGBTQIA+ people don't just participate - they thrive. We celebrate queerness openly and unapologetically, knowing that joy itself is a powerful form of resistance and community-building.

## WE'RE COMMITTED TO KEEPING OUR PROMISES.

We follow through — to our players, our partners, and each other.

Trust is built through consistency. When we make commitments, we honor them with transparency, accountability, and action — especially when it's difficult or inconvenient.

## COMMUNITY IS BUILT THROUGH CONNECTION.

Relationships are the foundation of everything we do. We believe connection — on the ice and off — is what transforms programs into community.

We invest in spaces, traditions, and experiences that foster friendships, trust, and mutual support, knowing that a connected community is more resilient, welcoming, and sustainable.

## WE LOWER BARRIERS TO HOCKEY.

Access is intentional, not accidental.

We actively remove financial, cultural, and structural barriers to participation. Hockey should never be gated by identity, income, experience, or insider knowledge — and we design our programs accordingly.

## SAFETY IS A PRIORITY.

Belonging requires safety in all forms — physical, emotional, and psychological.

We do not tolerate harm, harassment, or abuse in any form. We prioritize proactive policies, clear reporting pathways, and swift accountability to protect our community.

## LGBTQIA+ CENTERED. ALLY-WELCOMING.

We lead with queer voices while inviting allies to stand with us.

Our work centers LGBTQIA+ experiences, leadership, and needs — while creating space for allies who share our values and show up with curiosity, humility and respect.

## WE LISTEN AND CHALLENGE OUR BIAS.

Growth begins with self-awareness.

We commit to learning, unlearning, and listening — especially when feedback is uncomfortable. We expect curiosity over defensiveness and accountability over intent.









## BELONGING, BUILT IN.

Inclusion is designed, not assumed.

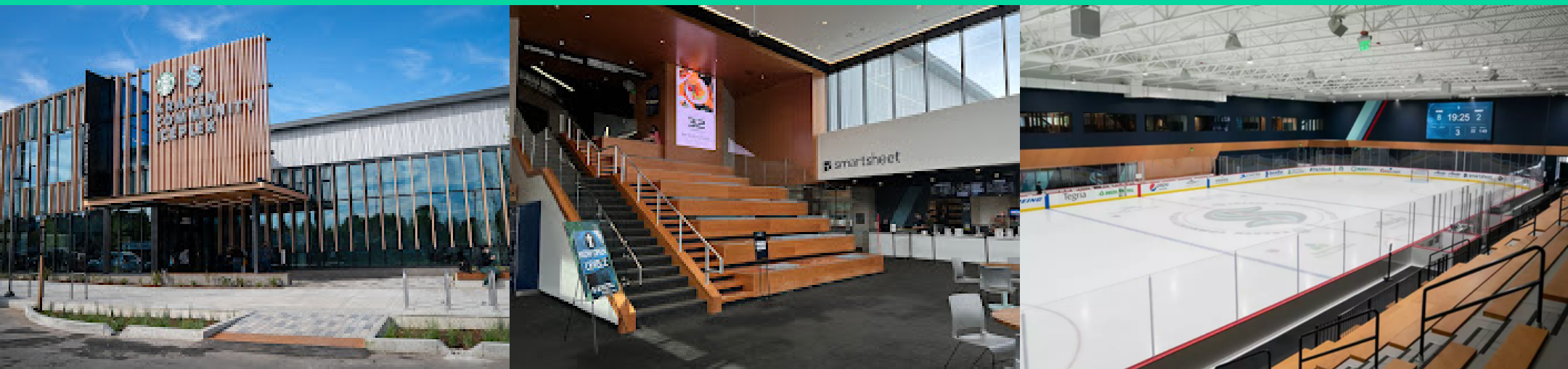
We intentionally build systems, programs, and cultures where people feel seen, valued, and supported — across identities, skill levels, and backgrounds.

# TRAVELING FROM THE AIRPORT

This guide will help you navigate from Seattle-Tacoma International Airport (SEA) to Northgate Station - your gateway to Kraken Community Iceplex and our host hotel, Hampton Inn & Suites Seattle/Northgate.

<p><b>Pit stop?</b> Hit the restroom before heading out - it's a long journey. Your bags will take a few minutes to arrive anyway.</p>	
<p>Follow the signs to 'Baggage Claim' and check the TV monitors to find your assigned carousel.</p>	
<p>Checked a gear bag? If it's not on the carousel, check the 'Oversized Baggage' windows.</p>	
<p>Once you have your bags, head up the escalator and follow signs for '<b>Sound Transit Link Light Rail</b>' (it's a bit of a distance!). Need assistance? A complimentary golf cart shuttle runs daily from 5 AM – 12 AM.</p>	
<p>Purchase a one-way ticket to Northgate Station at the ticket vending machines.</p>	
<p>Board the <b>northbound 1-Line train to Northgate Station</b>. (DO NOT board the southbound train to Federal Way Station!)</p>	
<p>Sit back and relax - the <b>ride takes about 50 minutes (Northgate Station is the 17th stop)</b>. Stops are displayed and announced overhead.</p>	
<p>Welcome to Northgate! From here:</p> <ul style="list-style-type: none"> <li>• Kraken Community Iceplex is a (0.4) mile journey northeast.</li> <li>• Hampton Inn &amp; Suites is a (0.3) mile journey south.</li> </ul> <p><i>If you're staying at the hotel, call them at (206) 522-6991 to request a complimentary pick up.</i></p>	

# KRAKEN COMMUNITY ICEPLEX



## KRAKEN COMMUNITY ICEPLEX HISTORY

**OCTOBER  
8, 2018** — Announced

**FEBRUARY  
27, 2020** — Construction started

**SEPTEMBER  
10, 2021** — Officially opened

**DECEMBER  
9, 2025** — Expansion planned

## KRAKEN COMMUNITY ICEPLEX (KCI)

Kraken Community Iceplex is the home of the Seattle Kraken and ice sports in Seattle. We are dedicated to the development of youth and adult ice sports in Seattle and the Puget Sound region. We hold fast to our commitment to providing our athletes, volunteers, officials and families a safe and fun environment to grow on and off the ice.

We value teamwork, competition, discipline, sportsmanship and hard work to cultivate exceptional people and athletes. We are dedicated to growing our community of hockey players, figure skaters and other ice sport participants, prioritizing an inclusive and welcoming environment for all.

At Kraken Community Iceplex, all are welcome because **WE ARE ALL KRAKEN.**

Source: <https://www.krakencommunityiceplex.com/venue/about-us/>

## FACILITY FEATURES

- Three NHL-sized ice rinks
- 12 locker rooms
- Two meeting rooms
- Starbucks Community Store
- Kraken Team Store
- 32 Bar & Grill
- WaFd Bank ATM

# RAFFLE PRIZES



We'll have raffle prizes all weekend long!

- Single Ticket = \$1
- 10 Tickets = \$5
- Your Own Height = \$25
- Your Friends Height = \$35
- Your Friends Height on Skates = \$40

Among the prizes are some of the following:

- 24/25 Kraken Team Signed Jersey (donated by PitchBook)
- 25/26 Kraken Team Signed Jersey (donated by PitchBook)
- 25/26 Kraken Team Signed Stick (x2) (donated by PitchBook)
- YETI cooler with Alaska Items (donated by Judy Campbell)
- 4 Torrent tickets! (donated by Seattle Torrent)
- 2 Suite tickets to join us at Sounders Pride Night (donated by Seattle Sounders)
- Bottle of Wine, Tasting for 6, Stickers, Pride hat (donated by Wolfpack Cellars)
- 4 pack of tickets to the Space Needle (donated by Space Needle)

**Drawing will occur on Sunday at 1:00 PM.**

# ICEBREAKER SOCIAL



**FRIDAY 06/12/26**

- ICEBREAKER SOCIAL AT STOUP BREWING - CAPITOL HILL | 7:00 PM - 11:00 PM
- BUS TO ICEBREAKER DEPARTS HOTEL AT 6:45 PM; RETURNS AT 9:30 & 11:00 PM

## LINE UP

6:45 PM	—	BUS LEAVES HOTEL
7:00 PM	—	SOCIALIZE
9:00 PM	—	RAFFLES DRAWN
9:30 PM	—	BUS DEPARTS
11:00 PM	—	LAST BUS

### How To Collect Raffle Tickets:



Fill out your Bingo card by connecting with your fellow players & guests = 1 ticket!

Show up in your most Pride-forward, festive outfit/accessories = 1 ticket!



# CONFERENCE SETUP



## SOCIAL

For players seeking a level playing field without the pressure of competition, this conference offers a more social and inclusive hockey experience. Emphasizing camaraderie and enjoyment, it moves away from standings, trophies, and medals to foster a friendly atmosphere. Players will engage in a round-robin format, with teams balanced by skill level to ensure fun and engaging games. All matchups will be shared in full, so there's no guessing your game time on Sunday.

Equality Division

Radiance Division



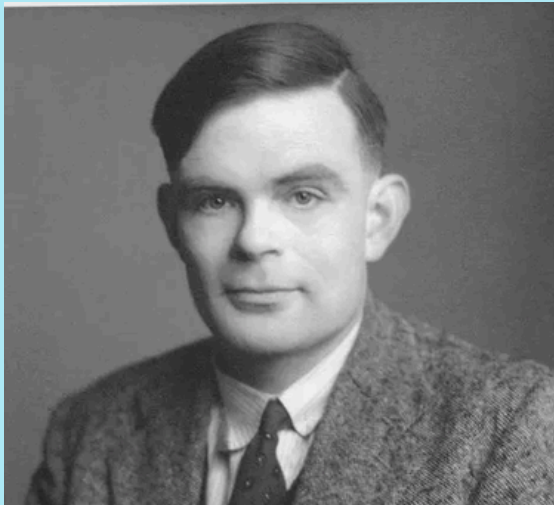
## COMPETITIVE

In this conference, the objective is to continue the competitive nature of prior Seattle Pride Classics. Players choosing this format will enjoy the same exciting features as in previous years, including structured gameplay and a focus on standings. The final game on Sunday will be determined by standings, with trophies and first and second-place medals awarded to recognize top performers.

Stonewall Division

Victory Division

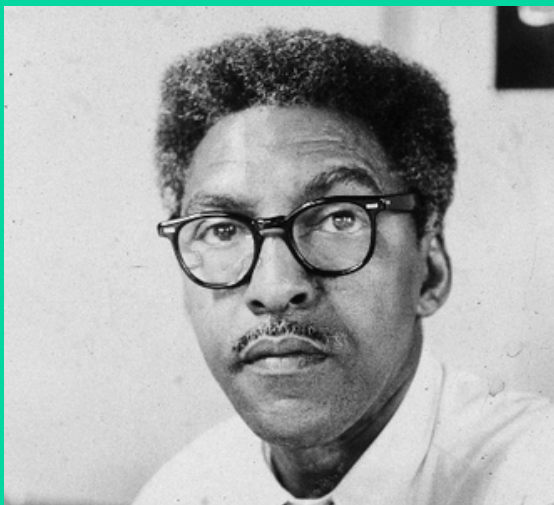
# TEAM ICONS



## **Alan Turing (1912-1954)**

### **Turing's Titans**

Alan Turing was a brilliant mathematician and codebreaker whose work helped shorten World War II and laid the foundation for modern computing. He was later prosecuted in the United Kingdom for being gay, a devastating example of the persecution LGBTQIA+ people faced. Today, he is remembered both as a scientific pioneer and as a symbol of the injustice queer people have endured.



## **Bayard Rustin (1912-1987)**

### **Bayard's Breakers**

Bayard Rustin was a key strategist of the Civil Rights Movement and one of the principal organizers of the 1963 March on Washington. As an openly gay Black man, he often faced discrimination both from society at large and within the movements he helped lead. Today, he is recognized as a vital figure in both Black history and LGBTQIA+ history.



## **Billie Jean King**

### **Billie's Aces**

Billie Jean King is a tennis icon who transformed women's sports through her dominance on the court and her fight for gender equity. After being publicly outed, she became one of the first major athletes to live openly as a lesbian. Her legacy reaches far beyond tennis, making her a lasting champion for equality, visibility, and inclusion.



## **Brittney Griner**

### **Griner's Gladiators**

Brittney Griner is a professional basketball star, Olympic gold medalist, and one of the most visible openly gay athletes in the world. Her success at the highest levels of sport has helped expand representation for LGBTQIA+ athletes, especially in women's basketball. She is celebrated as both an elite competitor and a powerful example of authenticity and resilience.

# TEAM ICONS



## **Edie Windsor (1929-2017)**

### **Edie's Enforcers**

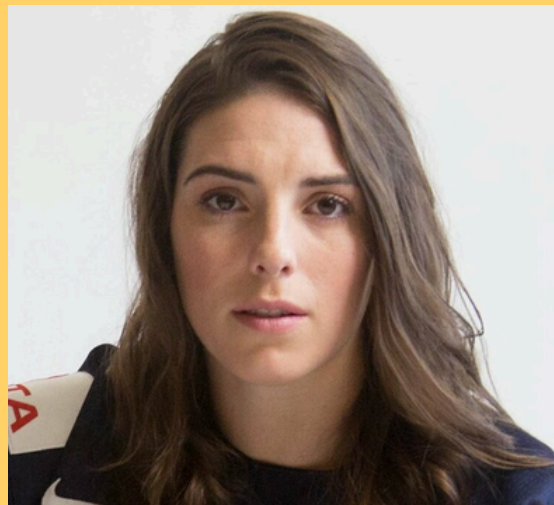
Edie Windsor was a trailblazing LGBTQIA+ activist whose lawsuit against the U.S. government led to the downfall of the Defense of Marriage Act. Her Supreme Court victory became a major turning point in the fight for marriage equality in the United States. She is remembered as a powerful force for dignity, love, and legal equality.



## **Harvey Milk (1930-1978)**

### **Harvey's Heroes**

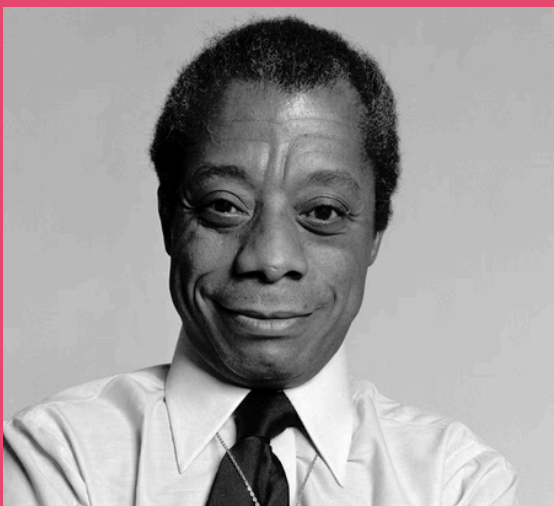
Harvey Milk was one of the first openly gay elected officials in the United States and a groundbreaking voice for LGBTQIA+ rights. He used public office to advocate for queer visibility, dignity, and political power at a time when doing so carried enormous risk. His life and legacy continue to inspire generations to fight for representation and justice.



## **Hilary Knight**

### **Hilary's Knights**

Hilary Knight is one of the most accomplished players in women's hockey history, with Olympic and World Championship success spanning many years. As an openly gay athlete, she has helped increase LGBTQIA+ visibility within hockey and women's sports. Her legacy is one of excellence, leadership, and helping make hockey more inclusive.



## **James Baldwin (1924-1987)**

### **Baldwin's Blazers**

James Baldwin was a celebrated writer and public intellectual whose work explored race, sexuality, identity, and injustice in America. As a Black gay man, he gave voice to experiences and truths that were often ignored or silenced. Today, he is honored as one of the most important literary and cultural figures in both American and LGBTQIA+ history.

# TEAM ICONS



## **Jessica Campbell** **Campbell's Commanders**

Jessica Campbell is a trailblazing hockey coach who became the first woman to hold a full-time behind-the-bench coaching role in the NHL. While she is not primarily known as an LGBTQIA+ historical figure, she represents the breaking of long-standing barriers in a sport that has traditionally excluded many voices. Her inclusion in this lineup can reflect the broader fight for equity, representation, and change within hockey culture.



## **Justin Rogers** **Rogers' Rebels**

Justin Rogers is the Head Athletic Trainer for the Seattle Kraken and is recognized by the club as the first openly gay head athletic trainer in the NHL. His visibility in a behind-the-bench NHL role matters in a sport that has historically had very little openly LGBTQIA+ representation, especially among hockey operations staff. Today, he represents progress not just in who plays the game, but in who gets to lead, care for, and shape it from within.



## **Laverne Cox** **Laverne's Legends**

Laverne Cox is an actress, producer, and advocate who became one of the most visible transgender figures in popular culture. Through her work and public voice, she has helped bring transgender experiences, dignity, and rights into mainstream conversation. She is widely celebrated as a trailblazer for trans representation and visibility.



## **Layshia Clarendon** **Clarendon's Thunder**

Layshia Clarendon is a professional basketball player and one of the most prominent openly trans and nonbinary athletes in sports. They have used their platform to advocate for inclusion, healthcare access, and respect for gender-diverse people both in and out of athletics. Clarendon's impact is deeply felt in the ongoing fight for trans visibility and belonging in sports.

# TEAM ICONS



## **Luke Prokop** **Prokop's Pride**

Luke Prokop made history as the first openly gay player signed to an NHL contract. His decision to come out marked a major moment for men's professional hockey, where LGBTQIA+ visibility has long been limited. He represents courage, progress, and the hope of a more inclusive future for the sport.



## **M.J. Rodriguez** **M.J.'s Magic**

M.J. Rodriguez is an award-winning actress and singer best known for her groundbreaking work in television, especially through roles that center trans women with depth and humanity. She became a major milestone in entertainment as one of the first openly trans performers to receive top mainstream acting recognition. Her success has helped push forward trans visibility and representation in popular culture.



## **Marsha P. Johnson (1945-1992)** **Marsha's Rioters**

Marsha P. Johnson was a Black trans activist, drag performer, and one of the most beloved figures in LGBTQIA+ liberation history. She is closely associated with the Stonewall uprising and spent her life caring for and advocating for queer and unhoused communities. Today, she is remembered as a symbol of joy, resistance, and radical love.



## **Matthew Shepard (1976-1998)** **Matthew's Mavericks**

Matthew Shepard was a young gay man whose 1998 murder became a watershed moment in the fight against anti-LGBTQIA+ violence. His death drew international attention to the dangers of hate crimes and helped galvanize activism and legal reform. His legacy lives on in ongoing work for safety, dignity, and equal protection under the law.

# TEAM ICONS



## **Sue Bird** **Bird's Ballers**

Sue Bird is one of the most decorated basketball players of all time, with an extraordinary career across the WNBA, Olympics, and international play. As an openly gay athlete, she has been an important figure for LGBTQIA+ visibility in sports and a role model for countless fans. She is celebrated for both her elite performance and her authentic, public leadership.



## **Sylvia Rivera (1951-2002)** **Sylvia's Storm**

Sylvia Rivera was a Latina trans activist and a fierce advocate for people who were often excluded even within LGBTQIA+ spaces. Alongside Marsha P. Johnson, she fought for queer and trans youth, unhoused people, and others living at the margins. Her legacy is one of unapologetic activism and demanding that liberation include everyone.



## **Trans Wave**

Trans Wave Ice Hockey is an all-level adult hockey team made up of transgender and gender non-conforming players from across North America. Through tournaments, showcases, and community-building, Trans Wave creates space for trans and gender-diverse players to compete, connect, and be fully themselves in a sport that has too often failed to make room for them. Today, Trans Wave stands as a powerful symbol of visibility, belonging, and joy on the ice — proof that trans players have always belonged in hockey and always will.



## **Team Trans**

Team Trans is an all-trans and nonbinary hockey community with more than 700 players across the U.S. and Canada. The organization creates a welcoming space for transgender athletes to play hockey, build community, and participate in tournaments while promoting inclusion, visibility, and support both on and off the ice. Beyond competition, Team Trans emphasizes creating safe locker-room environments, fostering friendship and visibility, and helping transgender and nonbinary athletes continue playing the sport they love in an atmosphere of support and belonging.

# TOURNAMENT SCHEDULE

ATTENTION PLEASE!

**THIS YEAR'S ABOUT TO GET HEATED! STICK AROUND FOR THESE ACTION PACKED GAMES!**

We'd love for you to stay and support our peers in the **Alaska Airlines: All Stars of Pride** and **Symetra Competitive Final**. We need a loud crowd to keep the rink energy high for these games, so please join us in the stands to catch some great hockey!

**SATURDAY 06/13/26**

**ALASKA AIRLINES: ALL STARS OF PRIDE  
STARBUCKS RINK 1 | 3:30 PM - 5:30 PM**

**GET SPECTATOR  
TICKETS**



**SUNDAY 06/14/26**

**SYMETRA COMPETITIVE FINAL  
STARBUCKS RINK 1 | 1:30 PM - 3:00 PM**

**GET SPECTATOR  
TICKETS**



# TOURNAMENT CHECK-IN

## CAPTAIN & TEAM CHECK-IN FRIDAY 06/12/26

To help us with the flow of activity in the main lobby, please do not arrive or check-in too much sooner than your prescribed team check-in window below. If you arrive early, we may ask you to wait until we're prepared for your team.

### SOCIAL CONFERENCE

Captain Check-in	Team Check-in	Equity Division Teams	Captain Check-in	Team Check-in	Radiance Division Teams
6:20 AM	6:35 AM	Bayard's Breakers	8:25 AM	8:40 AM	Griner's Gladiators
6:20 AM	6:35 AM	Sylvia's Storm	8:25 AM	8:40 AM	Trans Wave
7:30 AM	7:45 AM	Clarendon's Thunder	8:55 AM	9:10 AM	Harvey's Heroes
7:30 AM	7:45 AM	Laverne's Legends	8:55 AM	9:10 AM	Roger's Rebels
7:45 AM	8:00 AM	Edie's Enforcers	9:10 AM	9:25 AM	M.J.'s Magic
7:45 AM	8:00 AM	Hilary's Knights	9:10 AM	9:25 AM	Prokop's Pride

### COMPETITIVE CONFERENCE

Captain Check-in	Team Check-in	Stonewall Division Teams	Captain Check-in	Team Check-in	Victory Division Teams
9:50 AM	10:05 AM	Turing's Titans	10:35 AM	10:50 AM	Matthew's Mavericks
9:50 AM	10:05 AM	Billie's Aces	10:35 AM	10:50 AM	Baldwin's Blazers
10:20 AM	10:35 AM	Marsha's Rioters	4:00 PM	4:15 PM	Bird's Ballers
10:20 AM	10:35 AM	Team Trans	4:00 PM	4:15 PM	Campbell's Commanders

**IF YOU ORDERED A PRIDE NAMEBAR, GET IT PRESSED ON DURING YOUR CHECK-IN WINDOW.**



# DAY 1: FRIDAY 06/12/26

GET SPECTATOR  
TICKETS

## EQUALITY DIVISION (SOCIAL CONFERENCE)

START	END	AWAY	HOME
7:20 AM	8:30 AM	Bayard's Breakers	Sylvia's Storm
8:30 AM	9:40 AM	Clarendon's Thunder	Laverne's Legends
8:45 AM	9:55 AM	Edie's Enforcers	Hilary's Knights
12:15 PM	1:25 PM	Bayard's Breakers	Laverne's Legends
12:45 PM	1:45 PM	Sylvia's Storm	Hilary's Knights
1:00 PM	2:10 PM	Clarendon's Thunder	Edie's Enforcers

## RADIANCE DIVISION (SOCIAL CONFERENCE)

START	END	AWAY	HOME
9:25 AM	10:35 AM	Griner's Gladiators	Trans Wave
9:55 AM	11:05 AM	Harvey's Heroes	Roger's Rebels
10:10 AM	11:20 AM	M.J.'s Magic	Prokop's Pride
2:10 PM	3:20 PM	Griner's Gladiators	Roger's Rebels
2:25 PM	3:35 PM	Trans Wave	Prokop's Pride
3:50 PM	5:00 PM	Harvey's Heroes	M.J.'s Magic

## STONEWALL DIVISION (COMPETITIVE CONFERENCE)

START	END	AWAY	HOME
10:50 AM	12:00 PM	Turing's Titans	Billie's Aces
11:20 AM	12:30 PM	Marsha's Rioters	Team Trans

## VICTORY DIVISION (COMPETITIVE CONFERENCE)

START	END	AWAY	HOME
11:35 AM	12:45 PM	Matthew's Mavericks	Baldwin's Blazers
5:00 PM	6:10 PM	Bird's Ballers	Campbell's Commanders

ICEBREAKER SOCIAL AT STOUP BREWING - CAPITOL HILL | 7:00 PM - 11:00 PM

# DAY 2: SATURDAY 06/13/26

GET SPECTATOR  
TICKETS

## EQUALITY DIVISION (SOCIAL CONFERENCE)

START	END	AWAY	HOME
10:25 AM	11:35 AM	Laverne's Legends	Edie's Enforcers
11:50 AM	1:00 PM	Hilary's Knights	Bayard's Breakers
1:10 PM	2:20 PM	Sylvia's Storm	Clarendon's Thunder
6:00 PM	7:10 PM	Hilary's Knights	Clarendon's Thunder
7:10 PM	8:20 PM	Laverne's Legends	Sylvia's Storm
9:25 PM	10:35 PM	Edie's Enforcers	Bayard's Breakers

## RADIANCE DIVISION (SOCIAL CONFERENCE)

START	END	AWAY	HOME
9:00 AM	10:10 AM	Roger's Rebels	M.J.'s Magic
11:45 AM	12:55 PM	Prokop's Pride	Griner's Gladiators
2:40 PM	3:50 PM	Trans Wave	Harvey's Heroes
5:45 PM	6:55 PM	M.J.'s Magic	Griner's Gladiators
8:35 PM	9:45 PM	Roger's Rebels	Trans Wave
8:50 PM	10:00 PM	Prokop's Pride	Harvey's Heroes

## STONEWALL DIVISION (COMPETITIVE CONFERENCE)

START	END	AWAY	HOME
1:15 PM	2:25 PM	Team Trans	Turing's Titans
2:35 PM	3:45 PM	Billie's Aces	Marsha's Rioters

## VICTORY DIVISION (COMPETITIVE CONFERENCE)

START	END	AWAY	HOME
7:25 PM	8:35 PM	Baldwin's Blazers	Bird's Ballers
8:00 PM	9:10 PM	Campbell's Commanders	Matthew's Mavericks

# DAY 3: SUNDAY 06/14/26

GET SPECTATOR TICKETS

## STONEWALL DIVISION (COMPETITIVE CONFERENCE)

START	END	AWAY	HOME
10:10 AM	11:20 AM	Billie's Aces	Team Trans
10:25 PM	11:35 PM	Marsha's Rioters	Turing's Titans
11:50 AM	1:00 PM	4th Seed	3rd Seed
12:05 PM	1:15 PM	2nd Seed	1st Seed

## VICTORY DIVISION (COMPETITIVE CONFERENCE)

START	END	AWAY	HOME
9:00 AM	10:10 AM	Baldwin's Blazers	Campbell's Commanders
9:15 AM	10:25 AM	Bird's Ballers	Matthew's Mavericks
10:40 AM	11:50 AM	4th Seed	3rd Seed
11:35 AM	12:45 PM	2nd Seed	1st Seed

## COMPETITIVE FINAL

START	END	AWAY	HOME
1:45 PM	2:55 PM	2nd Seed	1st Seed

**PRIDE PUBLIC SKATE | 3:15 PM - 5:00 PM**  
 10% OF PROCEEDS FROM THE PUBLIC SKATE ARE DONATED TO SEATTLE PRIDE HOCKEY ASSOCIATION

REGISTER FOR THE SKATE



# AWARDS & GIVEAWAYS

## TOURNAMENT-WIDE



### OUTSTANDING PLAYER HAT + STICKER

At the conclusion of every game, including Alaska Airlines: All Stars of Pride and the Competitive Final, one (1) player per team will receive a Seattle Pride Classic hat and sticker.

### PLAYER OF PRIDE TROPHY WITH PUCK BASE

Each team nominates one teammate of their own by voting using the QR code in locker rooms. At the conclusion of each team's fourth and final game on Saturday or Sunday, one (1) player will receive the Player of Pride trophy. This award is not presented during Alaska Airlines: All Stars of Pride or the Competitive Final.



### TEAM CAPTAIN PATCH

One (1) Team Captain patch will be provided to each designated team captain.

### FIVE-YEAR COMMEMORATIVE PATCH

This patch recognizes players who have participated in Seattle Pride Classic for five consecutive years.



# OUTSTANDING PLAYER & PLAYER OF PRIDE NOMINATIONS

## Outstanding Player Recognition

- The Outstanding Player recognition is a team-driven award presented after each game to a player from the opposing team.
- At the conclusion of each game, teams will select one player from their opponent's roster who stood out through strong play, effort, sportsmanship, teamwork, or positive tournament spirit.
- The selected player will receive an Outstanding Player hat and sticker as recognition of their contribution to the game.
- Outstanding Player recognition will take place across all tournament games, including the All Stars of Pride game and Competitive Final games.

## Player of Pride Nominations

- The Player of Pride award is a team-driven recognition presented to one player from each team who best represents the spirit of the Seattle Pride Classic.
- This award is intended to celebrate a player who contributes positively to their team and the tournament experience through sportsmanship, leadership, teamwork, inclusivity, encouragement, and pride – both on and off the ice.

## **Nomination Process**

- Each team is responsible for selecting its own Player of Pride recipient.
- Teams are asked to submit their Player of Pride nomination prior to the start of their fourth/final tournament game. There are QR codes in every locker room to submit your nomination. We ask that you only submit one (1) nomination submission. This allows tournament staff enough time to prepare the award for presentation.
- The Player of Pride award will be presented directly to the selected player at the conclusion of the team's fourth/final game.

## **Award Presentation**

- Each Player of Pride recipient will receive a commemorative acrylic trophy disc recognizing their contribution to the Seattle Pride Classic.

## **Important Notes**

- Player of Pride awards are presented during each team's tournament scheduled game only.
- There are no Player of Pride awards presented for the All Stars of Pride or Competitive Final games.

# AWARDS & GIVEAWAYS

## ALASKA AIRLINES: ALL STARS OF PRIDE



### COMMEMORATIVE TWILL JERSEY + SOCKS

All players selected to participate in Alaska Airlines: All Stars of Pride will receive a commemorative twill jersey and coordinating socks to keep.

### OUTSTANDING PLAYER HAT + STICKER

At the conclusion of Alaska Airlines: All Stars of Pride, each team will identify one (1) player on the opposing team to receive a Seattle Pride Classic hat and sticker.



### ALL STARS OF PRIDE TROPHY MOUNTED ON A PUCK BASE

At the conclusion of Alaska Airlines: All Stars of Pride, each participating player will receive an All Stars of Pride trophy.

# ALL STARS OF PRIDE NOMINATIONS

## 1 Officials Nominate

During games 1-9 and 16, referees and scorekeepers nominate two players from each team.

## 2 40-Player Pool

Nominees from all 20 teams enter the selection pool, including skaters and goaltenders.

## 3 Random Lottery

28 players are randomly selected: 26 skaters and 2 goaltenders.

## 4 Two Teams Built

Selected players are divided into two teams of 13 skaters and 1 goaltender each.

## 5 Saturday Announcement

Players and teams are announced first thing Saturday morning.

## 6 Opt-Out Opportunity

Selected players may opt out if they are unable or do not wish to participate.

The All Stars of Pride game is a celebration of the players who help make the Seattle Pride Classic special – not necessarily through skill and competition, but through sportsmanship, teamwork, positivity, and the spirit of inclusive hockey. For the 2026 tournament, All Stars of Pride nominations will be submitted by referees and scorekeepers during designated tournament games. This process is intended to create a fair, game-based nomination system that recognizes players across all participating teams.

### Nomination Process

During tournament games 1-9 and 16, referees and scorekeepers will nominate two players from each team.

Nominees may be selected based on a combination of factors, including but not limited to:

- Strong play and effort on the ice;
- Positive attitude and team spirit;
- Good sportsmanship;
- Respect for officials, opponents, teammates, and volunteers;
- Representation of the values and spirit of the Seattle Pride Classic.

Nominations are not based solely on points, goals, saves, or statistics. The All Stars of Pride game is designed to highlight players who contribute meaningfully to the tournament experience both on and off the scoresheet.

### Lottery Selection

All nominated players will be entered into a random lottery selection pool. A total of 40 players will be included in the nomination pool (inclusive of both skaters & goaltenders). From that pool, 28 players will be randomly selected to participate in the All Stars of Pride game:

- 26 skaters
- 2 goaltenders

The selected players will be divided into two All Stars of Pride teams, with each team consisting of:

- 13 skaters
- 1 goaltender

To ensure broad team representation, a minimum of one player from each team of the 20 teams will be represented in the All Stars of Pride game.

### Player Announcements & Opt-Out

Selected players and All Stars of Pride team assignments will be announced first thing Saturday morning.

Players who are selected will have the opportunity to opt out if they are unable or do not wish to participate. If a selected player opts out, tournament staff may select an alternate from the nomination pool to fill the available roster spot, while maintaining tournament-wide team representation whenever possible.

### Spirit of the Game

The All Stars of Pride game is about more than individual performance. It is an opportunity to celebrate the people who embody the heart of the Seattle Pride Classic: inclusive competition, community, joy, respect, and pride.

Players selected for the All Stars of Pride game should represent the best of what this tournament stands for – creating a hockey environment where players are safe, seen, celebrated, and able to show up fully as themselves.

# AWARDS & GIVEAWAYS

## COMPETITIVE CONFERENCE



### EMPOWERS CUP & SYMETRA CUP TROPHIES

The Empowers Cup and Symetra Cup are the signature trophies awarded within the Competitive Conference.

### OUTSTANDING PLAYER HAT + STICKER

At the conclusion of the Competitive Final, one (1) player per team will receive a Seattle Pride Classic hat and sticker.



### GOLD & SILVER COMPETITIVE FINAL MEDALS

All players participating in the Competitive Final will receive a commemorative medal, with the first-place team receiving **gold medals** and the second-place team receiving **silver medals**.



# WATCH LIVE

Do you have family or friends who can't make it to Seattle and have serious FOMO (Fear Of Missing Out)? Don't worry. They can watch all the games live and in real time! Additional charges may apply.

## Where to watch:

Games will be available via LiveBarn. Click below to setup and watch from an offsite location.



LiveBarn



# MARKETPLACE MERCHANTS



# THANK YOU TO OUR SPONSORS & SUPPORTERS

PRESENTED BY



## SPONSORS



*Tito's*



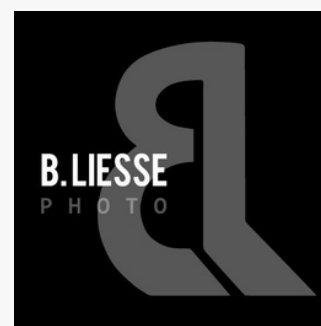
**WaFd**  
Bank



*Handmade*  
VODKA  
AUSTIN ★ TEXAS



## SUPPORTERS



**BODY**ARMOR

**BAUER**



**STARLINE**  
LUXURY COACHES

**BREAKAWAY**  
HOCKEY CO.

# THANK YOU TOURNAMENT PRODUCERS



**Steven  
Thompson**



**Joey  
Gale**



**Michelle  
Mendez**



**Alexis  
Haire**



**Andi  
Segur**



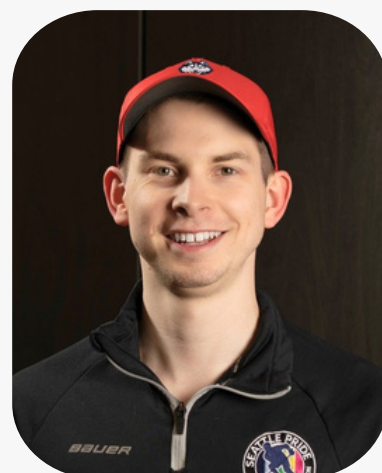
**Anna  
Heinrichs**



**Cody  
Christ**



**Gilbert  
Villalpando**



**Gavin  
Parker**



**Matthew  
Ives**



**Randy  
Coté**



**Tyler  
Murcko**



**Jessica  
Bennett**



**Minyoung  
Lee (Media)**



**Rosilynn  
Yoon (Media)**

# THANK YOU TOURNAMENT VOLUNTEERS

## VOLUNTEERS

Thank you to our 50+ volunteers that have contributed their time, energy, and emotional support to making our hockey tournament a tremendous success. Events like this don't happen without the commitment of people working behind the scenes to create a memorable experience for everyone.

On behalf of the organizing committee, players, and families, thank you for your generosity and commitment. We are truly grateful for everything you did to help make this tournament a success.

## LEAD VOLUNTEERS

We would like to extend a special thank you to our dedicated volunteers who will have contributed more than 30 hours of service to help make this year's hockey tournament a success.



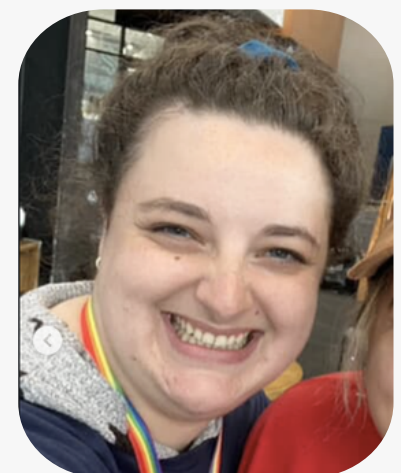
Alicia Hall-Whitehead



John Jachim



Rachel Moody



Sharyn Braff

Your extraordinary commitment went far beyond what was asked. Early mornings, late evenings, and countless tasks behind the scenes, you consistently showed up with enthusiasm, reliability, and a willingness to do whatever was needed. Thank you!

# GAME OPERATIONS CREW

## REFEREES

Thank you to all our referees who are working games all weekend long.



DJ Lucky Strike

## DJS



Orion Entertainment

## SCOREKEEPERS

Thank you to all our scorekeepers who are working games all weekend long.

## ANNOUNCERS



Andrew  
Truong



Everett  
Fitzhugh



Grant  
Beery



Ian  
Johnson

# SPONSOR A PLAYER DONORS

Thank you to the seven people who donated full-ride scholarship spots so players could be part of Seattle Pride Classic 2026.

- Sarah Sewell
- 6 anonymous donors

LEARN MORE ABOUT  
SPONSOR A PLAYER



# PRIDE NIGHTS

We appreciate the support of Pride Nights from the following organizations:



## MARINERS PRIDE NIGHT

Monday, June 29th celebrate Pride Night and watch the Mariners take on the Los Angeles Angels and help support diversity and inclusiveness in the Pacific Northwest baseball community.

[GET YOUR MARINERS PRIDE NIGHT TICKETS](#)

## SOUNDERS PRIDE NIGHT

Join the Seattle Pride Hockey Association on August 16th to Celebrate Pride with the Seattle Sounders FC! Each ticket includes a Sounders Branded Pride Fanny Pack

[GET YOUR SOUNDERS PRIDE NIGHT TICKETS](#)



## TORRENT PRIDE NIGHT - THANK YOU!

Saturday, April 25th, the Seattle Pride Unity Game was held and designed to celebrate and uplift LGBTQ+ communities while reinforcing the PWHL's commitment to inclusion, visibility, and belonging in sport.

## KRAKEN PRIDE NIGHT - THANK YOU!

Thursday, January 8th, Pride Night presented by Symetra and the purpose of the Seattle Kraken's Pride Night is to foster inclusivity, equity, and belonging within the hockey community, ensuring that all LGBTQ+ fans, players, and allies feel welcome.



# STATEMENT ON USA HOCKEY PARTICIPANT ELIGIBILITY POLICY

Seattle Pride Hockey Association unequivocally condemns USA Hockey's recent policy change that restricts participation based on sex assigned at birth. This policy is harmful, exclusionary, and fundamentally at odds with the values of equity, dignity, and belonging that hockey—and sport more broadly—should represent.

Transgender and nonbinary athletes belong in hockey. Full stop.

We want to be absolutely clear with our community: there is no change to the Seattle Pride Classic, our mission, or who is welcome to play. The Seattle Pride Classic remains fully inclusive of transgender, nonbinary, and gender-diverse players, just as it always has been. Our commitment to LGBTQIA+ inclusion is unwavering.

Like almost every hockey association across the country, players in the Seattle Pride Classic are required to register with USA Hockey for insurance purposes only. This administrative requirement does not reflect our values, nor does it change how we define eligibility, inclusion, or belonging within our tournament. We recognize that this requirement may feel painful, frustrating, or contradictory in light of USA Hockey's stance—and those feelings are valid.

Let us be clear: we do not agree with this policy, we do not support it, and we are actively opposed to it. We are exploring every possible alternative to reduce reliance on systems that exclude members of our community, while ensuring player safety and event viability.

Seattle Pride Classic exists because LGBTQIA+ players—especially trans and nonbinary players—have been pushed out of traditional hockey spaces for far too long. Our tournament is, and will remain, a place where you do not have to justify your identity to participate, where your gender is respected, and where hockey is played in the spirit of joy, safety, and chosen family.

To our trans community members: you are wanted here, you are protected here, and you are essential to this tournament. We stand with you, we believe you, and we will continue fighting for a hockey world that does better than this.

Hockey is for everyone—and we mean everyone.

We encourage everyone to write to USA Hockey in opposition of their new policy:

USA Hockey, Inc.

1775 Bob Johnson Dr.

Colorado Springs, CO 80906-4090

Phone: (719) 576-USAH (8724)

Fax: (719) 538-1160

E-mail: [usah@usahockey.org](mailto:usah@usahockey.org)

# EMERGENCY CONTACTS

If you need emergency assistance and are near the rink, please choose from the following options. The distance provided in the address is in relation to the rink.

## PACIFIC MEDICAL CENTERS-NORTHGATE (MON - FRI, 7:30 AM - 5:30 PM)



(206) 517-6700



10416 5th Ave NE, Seattle, WA 98125 (0.2 mile)

## KAISER PERMANENTE NORTHGATE MEDICAL CENTER (MON - FRI, 8 AM - 5 PM)



(206) 302-1200



9800 4th Ave NE, Seattle, WA 98115 (0.5 mile)

## UW MEDICAL CENTER-NORTHWEST EMERGENCY ROOM (24/7)



(877) 694-4677



1550 N 115th St. Main Hospital, Seattle WA (1.1 miles)

**REPORT  
INCIDENTS**

**TOURNAMENT  
RULES**

**USA HOCKEY (FILING A CLAIM)**

<https://www.usahockey.com/filingaclaim>

**FEEDBACK & INCIDENT/INJURY REPORT**

<https://www.seattlepridehockey.org/feedback-injury/>

**DOWNLOAD A COPY OF  
THE TOURNAMENT RULES &  
GAME FORMAT**

Team captains will be provided with a printed copy in their kit.

# DONATE & VOLUNTEER

Your gift, no matter how big or how small, helps in a number of ways.

Seattle Pride Hockey Association is a 501(c)(3) nonprofit organization on a mission to grow the sport of ice hockey through diversity and inclusion. We believe that hockey is for everyone, and we work hard to create events & programs that bring our communities together to celebrate diversity.

[DONATE TODAY](#)

## VOLUNTEER

Want to help out but don't have the financial resources to do so? It's not too late!

Consider volunteering on an organizational level, or at a program level (either in a committee or at the program itself), like Seattle Pride Classic.

[VOLUNTEER TODAY](#)

## FRED MEYER SUPPORT

### 3 Steps to Link Your Card:

1. Sign in to your account at FredMeyer.com.
2. Go to your My Account section and select Community Rewards.
3. Search for the organization using the code **QR987** or "Seattle Pride Hockey Association" and click Enroll.

[REGISTER TODAY](#)

# GET CONNECTED

During the tournament, if you need help finding the rink—or anything else—texting us is the best way to get the fastest response!



(206) 627-0005



@seapridehockey



Discord

## Join Discord



# STAY CONNECTED

Discord



Instagram



Facebook



LinkedIn



X



YouTube

